



Electric multi-treatment chair
MULTIKA V2 range
MULT-V2-600

CARINA
Medical



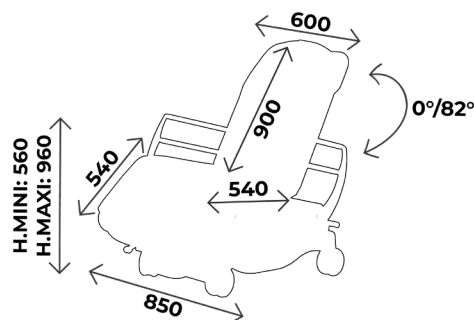
CE
ISO 9001
ISO 13485

TECHNICAL DETAILS

- 3 sections multi-treatment chair, width 60cm
- Control : Multifonctionnal hand remote
- Backrest and legrest adjustment with electric jacks
- Trendelenburg position
- One section mattress upholstery made of viscoelastic foam , thickness 9cm
- Equipped with 2 stainless steel side rails 25x10 to add accessories, a pushing bar and an exam sheet roller on the backrest
- Ergonomic headrest provided in standard
- Shapped base for ideal cleaning, base colour light grey (RAL 7035)
- Central brake system two pedals at the front and a brake bar on the back
- On 4 wheels diam. 150mm

DIMENSIONS

- Width 60cm, overall width 85cm
- Adjustable height from 56 to 96cm
- Load capacity : 200 kg in dynamic



You may also like :

Ref. **MULT-V2-600-01** : Same as MULT-V2-600 but with footrest

Ref. **MULT-V2-700** : Same as MULT-V2-600 but width 70cm

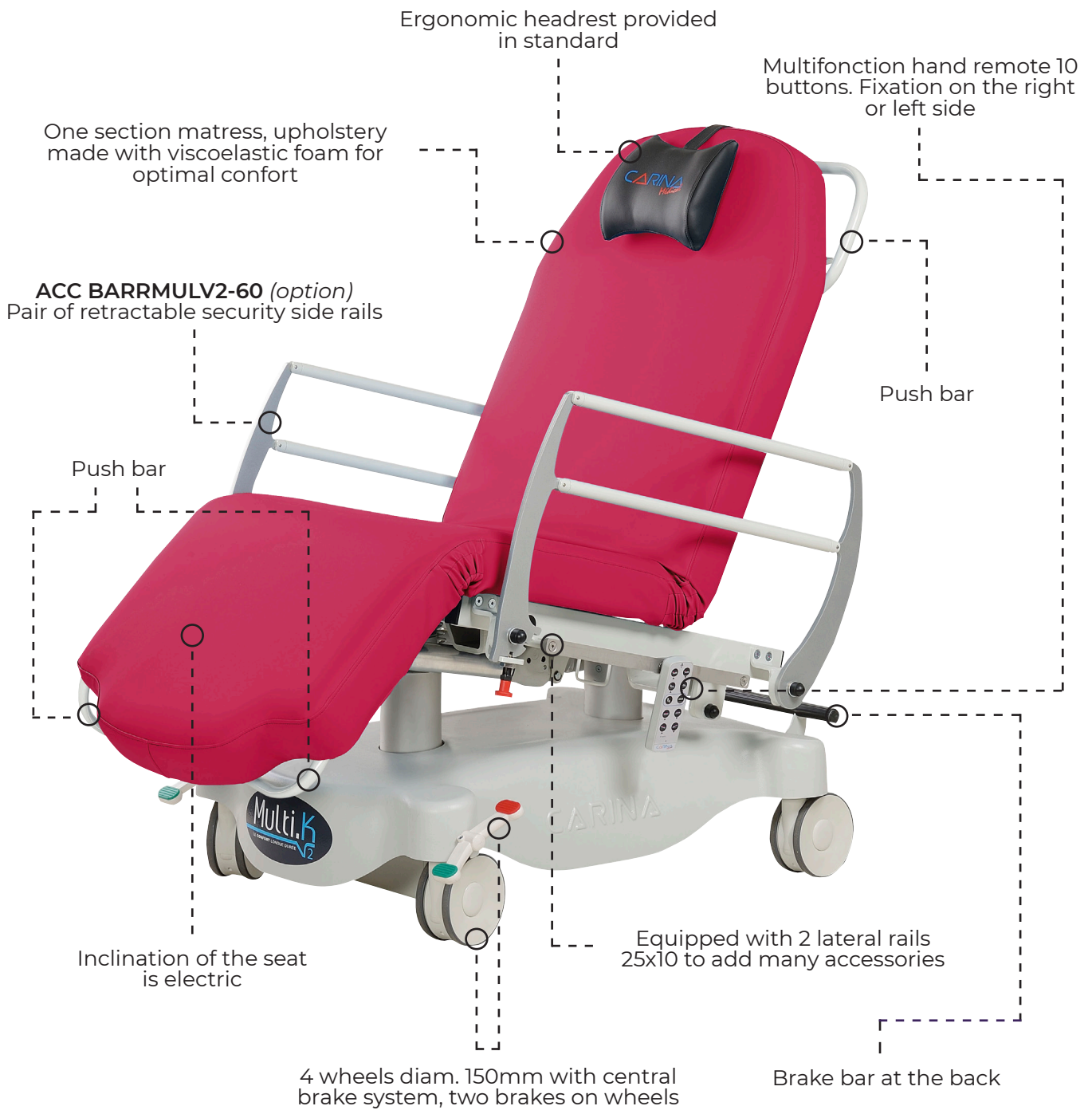
Ref. **MULT-V2-700-01** : Same as MULT-V2-600 but width 70cm and footrest



WHAT YOU NEED TO KNOW

- ✓ Delivery time: 15 days upon receipt of order
- ✓ Warranty : 5 years (1 year for the upholstery)

ZOOM MULT-V2-600 with accessories



ACCESSORIES



ACC CAPOT

Base colour in a different colour than the standard light grey available in different colours



RL-150

4 wheels diam. 150mm with central brake system



ACC MULTIK12

Armrest for MULTV2 chair with fixation clamp to fix on rail dim. 25x10, the unit



ACC 110POLY

Polyurethane blood test splint without clamp, the unit



ACC FEMINA02

Pair of stirrups, without clamp



ACC FEMINA964

Pair of legrests on knee system without clamp



ACC BATTERIE01

Battery, capacity 20 cycles (1 cycle = 1x height's up/ down + 1x backrest's up/ down)



ACC MULTIK02

Emergency position button



ACC CLAMEDIAM16

Adaptation clamp in aluminium for fixation on rail dim. 25x10, the unit diam. 14mm, diam. 16mm



ACC BARRMULV2-60

Pair of retractable security side rails width 60cm



ACC OVALIA03

Multifonction pedal



ACC MULTIK13

Flexible remote holder length 65cm to be fixed on frame with clamp



ACC MULTIK03

Infusion stand with 2 polyamid hooks equipped with one clamp for fixation on rail dim. 25x10



ACC MULTIK05

Reading tray, without clamp



ACC-MULTIKALEDN

Reading lamp with cold light with clamp



ACC 514-MULTIKA2

Plastic protection width 60cm for legrest

DEBRAYAGE

Manual disengagement of the backrest

UPHOLSTERY'S COLOURS

Fire retardant
upholstery, M1 class

For the upholstery colours, you can choose between the Classic and Urban range
without extra value

Upholstery : Classic range



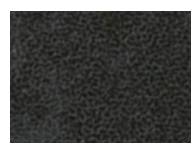
Arno



Garonne



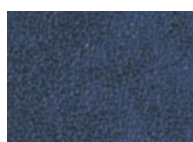
Potomac



Amour



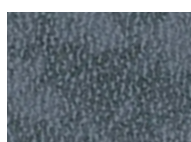
Mississippi



St Laurent



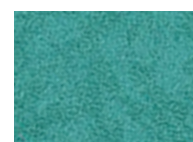
Rhône



Missouri



Seine



Amazone

Upholstery : Urban range



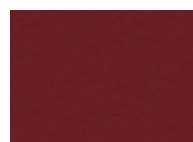
Abysses



Cendre



Origan



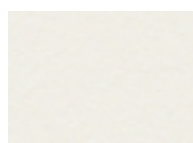
Géranium



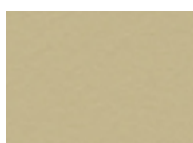
Réglisse



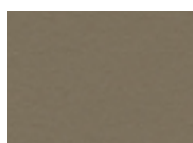
Prune



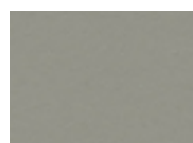
Perle



Ficelle



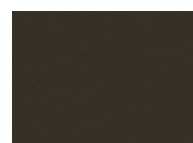
Terre



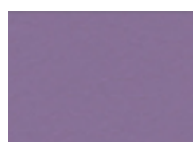
Béton



Chataigne



Chocolat



Pensée



Pétrole



Turquoise



Granny



Absinthe



Ananas



Orange



Fuschia

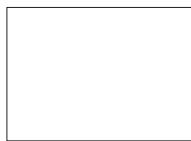


Tomate

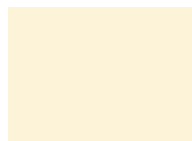
BASE COLOURS

The entire MULTIKA range has a light grey (RAL 7035) cover as standard
Possibility to change the colour of the cover **with an extra charge (option ACC CAPOT)**

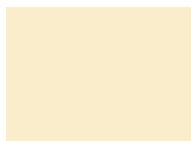
Base colour



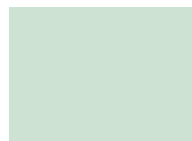
RAL 9003



RAL 1013



RAL 1015



RAL 6019



RAL 6033



RAL 6000



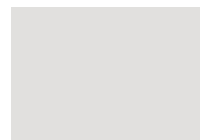
RAL 5017



RAL 5002



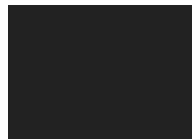
RAL 5000



RAL 7035



RAL 7016



RAL 9005



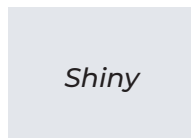
RAL 1018



RAL 3020



RAL 3003



Shiny

SILVER



MAINTENANCE GUIDE

DAILY MAINTENANCE

Upholstery : Cleaning with soapy water only (no solvents), can be disinfected with products such as Phagosept Spray, Salvanios pH10 at 0.75% and Anios Surfaces Hautes, without abrasive material

Base : cleaning with soapy water only (no solvents) without abrasive materials

WARRANTY

Mechanical/ electrical part : 5 years

Upholstery : 1 year



CONTACT

CARINA
Médical

Parc d'entreprises Visionis
278 rue de l'industrie
01090 GUÉREINS- FRANCE

COMMERCIAL DEPARTMENT

Tél : +33(0)4 74 66 69 49
Fax : +33(0)4 74 66 69 50
export@carinamedical.com